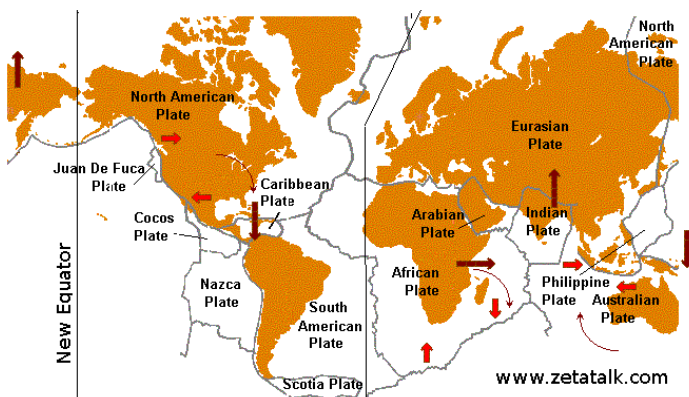


A Quick Review

1. PX is [in](#) the solar system at about 45 million miles away from Earth as of march 13th 2010.
2. When it passes, it will rearrange earth's continents and cause an almost 90 ° axis tilt: some continents will move hundreds of miles. Some will slightly sink or tilt, others will rise, most will have [massive flooding](#) for many hundreds of miles inland.
3. Planet X NewsLetter Source: The Zetas, communicate with brilliant “hive” like minds constantly processing subjects, even over decades, in the 4th dimension. They are extremely accurate and refined in what they know.
4. If you understand only a few things in the Zetataalk message, include this: You will *not hear* any announcements from any official body about the approach of Planet X, so you will have to make up your own mind about the information presented here and how it will impact your life and act on that accordingly.
5. There will very little help available for those who have not prepared, never mind the injured, as the emergency systems in place will not be able to cope.

Run up to the pole shift



Above, is the continent torque map for the pole shift. Notice the post pole shift geography is not reflected in this map. I have roughly indicated the plane of the new equator. Notice the equator adjusted for plate movement in the north Atlantic, which will widen during pole shift. The Pacific will compress.

Lulled into complacency

People who live in areas around the World which are experiencing difficult Earth change events know that things are *not ok* with Earth. Where I live, there is denial of Earth Changes in the norm. Unless people are directly affected by Earth changes, they expect their environment to remain the same based on personal histrionics. Western Cultures only encourage accumulation of material possession, attainment of cultural status and a minor accumulation of preapproved knowledge, but little beyond that. Western Culture does not support independent thinking. *This* is the danger in these last times: in this lead-up to the last weeks of obvious Earth Changes, that few will miss, is more critical than we know. Who wants our comfortable Life to go away? No person that I've talked to about PX was happy to

hear this story. So, the tendency is to *avoid* it. It's hard enough to accept the reality of the PX approach, let alone imagining the horrific effects to Earth and to start preparing likewise. So it is so important to *wake up* and start planning right *now*.

Guesstimate of Pole shift date

At this time, my best guess for the timing of the pole shift will be, at the earliest: Winter/Spring 2011, and at the latest: October 28th 2011. The October date is from my study of Ian Lungold's work. Based on this, we have about 1 year to prepare, *at the outside*. I do not want to *start* preparing when Earth Changes have accelerated to the point of triggering the financial markets and the general populous so that accepted services begin to unravel. *I want to be prepared before this point*. My concept of being prepared, is: (1.) Having a safe location identified and a route to to it planned. (2.) The goods, equipment and *food* in hand or on site that is needed to survive at least the first 1.5 years into the AfterTime. (3.) If living within 675 feet of sea level and up to 200 miles from the ocean, relocate accordingly. (check [here](#) for safe locations around the world)

Pre-shift opportunities

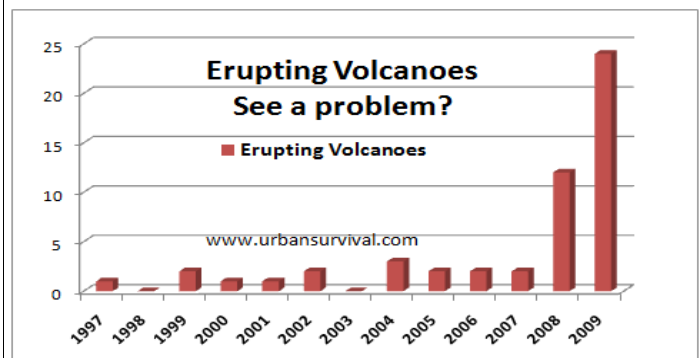
This is a time for alertness and preparation. Gently working towards informing your loved ones and extended family to begin to accept the eventuality of the Pole shift.

We need to be alert to the pace of Earth Changes as to give us a sense of appropriate timing to safely create and implement our survival plans. *This is* the purpose of these Newsletters to help the reader to stay informed about the PX approach in the most



timely and accurate way. Strike while the iron is hot. Order your bags of grain, those tools you need, the *seeds* you will need, canned goods, camping gear, etc. A more detailed suggestion of these items will be offered in future NewsLetters.

Above: The Aftertime will have limited sun for a few years – wind electrical generation is best, as PX will reduce the atmosphere somewhat, resulting in low cloud until the atmosphere rebuilds from the Ocean. Solar panels for backup.



What to watch for

- UFO sightings in your area.
- Unusual sky events
- Unusual weather events
- Earthquakes
- Unusual animal/bird behaviour
- Odd Ocean tides, rogue waves
- Ground noises or vibrations
- Unusual red sky color
- Visible "second sun" (sunrise/sunset)
- Unusual Moon placements
- Unusual electrical magnetic events
- Stars out-of-position
- Fireball/meteoroid activity
- Change in Sun colour
- Red dust deposits

All of the above events (except UFO sightings, these extraterrestrials are offering warnings). indicate some of the conditions that Earth is responding to the continuing approach of PX. If any of these conditions happen for the first time in your area, or increase in intensity, frequency or multiplicity, that is a red flag for the slide into the last months or weeks. We will all have to make that decision to move to our safe locations at some point before the 3 days of darkness event that will trigger everybody.

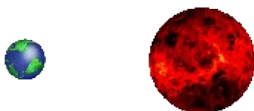
I cannot say this more emphatically, that being ready before the shift is the only way to go. I say this over and over: governmental or civil services will not be in place afterward!

Earth change events are different depending on where you live. Specific action is unique according to the locale you live in. The previous "watch" list are just some things to be on the lookout for, but keep a vigilant eye on world events, as these also will be a big clue. The point is, to make your best guess to put your action plan to work weeks before you feel your movement could be affected, such as border closings: Province, State or Country, even civil. On the highest levels, preparations are being made for exodus to occur from lowlands to highlands, away from the coast, etc. It is known which way people are going to want to run to safety. They will control the population with the military in the last week(s) to preserve order, but it will fail in the last days: civil servants, the military will leave their posts to be with their family. A very unstable time to make a move to safety.

Community

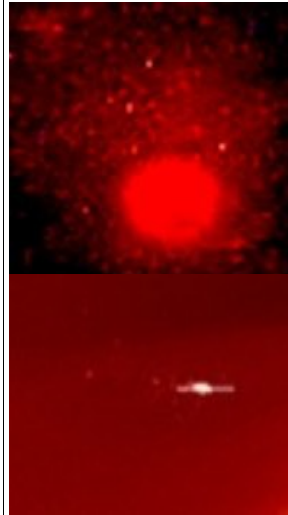
Community living pre-pole shift is optional. With city or town living, one can almost get by without it. Post pole shift, community will be essential in many ways, for example: security, food supply, entertainment, and exchange of goods via bartering. The fact of a reduced population in the aftertime, suggests how important a cooperative community will be, due to a limited amount of skills and services within that community. Perhaps living a little closer together due to the lack of gasoline driven vehicles, as well. Bicycle travel, boat and perhaps horse travel may come back in style. At any rate, we will be more reliant on others' skills as in a community of old time, say about 200 years ago. Contemplate the Industrial age or just prior.

These are the relative sizes of Earth to PX. Earth is 4x smaller than PX. Additionally, PX is 29x the mass and highly magnetic. Shown here without the two - 5 million mile long moon swirls that accompany PX.



Why doesn't NASA report the presence of PX?

They have, but retracted it. Today, if they did report the presence of PX, the U.S. Government would have a lot of explaining to do. Questions like: why did you tell us of the discovery at first and then hide it? That was 28 years ago! There would be riots in the streets once the general public became aware of PX and it's likely effect on Earth. NASA has been sending up satellites to secretly study it to try to figure out it's trajectory and likely path through our solar system and they still don't know. More lies would be forthcoming, as they would be loath to say they didn't actually know when or where it would pass.



Why can't we see it?

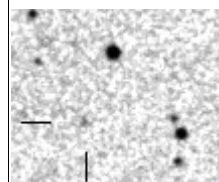
It approaches Earth in the glare of the Sun. Observation is done with very special equipment to see it during the day, except in 2003 when it entered our solar system. PX approaches our Sun from Orion and was visible at night by telescopes if you knew exactly where to look. The Zeta's gave the coordinates at the time for people to find it in the night sky.

Top image is a picture taken of PX in Louisiana, April 13, 2003 with a telescope by a hobbyist astronomer. Bottom, is a picture of PX as of March 26, 2010 from the Satellite

LASCO. The relative differences in size is misleading, this is due to the magnification variance, it is much closer than it appears to be in the bottom image. It's 7 years closer.

Financials in the Aftertime

With global Richter 9 earthquakes, hydroelectric dams will break and the supporting high-voltage towers and systems will also mostly be destroyed. Not only that, but many knowledgeable workers will not be available, so repairs will not likely be forthcoming. This means that computers will not be usable in any kind of distributed way, such as the internet: Therefore our banking system will be a thing of the past. Obviously, other forms of commerce will emerge, such as the barter system. Currencies are dependent on a functioning national government and government is dependent on communications. Since our internet, T.V. and radio is also dependent on electricity, they will not be available as a distributed service resulting in an annexed and debilitated government. Individuals, including the author, will have electrical generation up and running with short wave communications, however. My opinion is that our common currencies of today will fast become worthless in the aftertime.



January 5, 2002: Palomar image. The lines point to PX. Very exciting back in the day, I'm sure.

In my opinion, short wave transceivers, like the one to the right (IC-M710), will be a viable way to access or provide communication services in the aftertime.



Recent gems from the Zetas

March 27th 2010: [Zeta comments](#) from the Zeta Chats (through Nancy Leider) at [Godlikeproductions.com](#) Zetatalk forum:

“Prior to the last weeks thus, Planet X will be stationed more to the right of the Sun in the line of view, presenting many more opportunities for a Second Sun to be seen along with the rising or setting Sun.”

This is a good flag to watch for as an important timing clue for the beginning of the last weeks before the pole shift. Remember, amazingly, the Earth is halted in its orbit due to PX's powerful particle flows locking it in “the cup” Zeta's explain [here](#). Otherwise, we would be having a seasonal view of PX in the Sunrise/Sunset as we would, notwithstanding the PX orbit lock, be orbiting normally around the Sun. Since we *are locked* between Earth's September/August orbit position, (we are slowly being pushed backwards) the view of PX, once it's close enough, will be daily. Next, the Earth's rotation *will stop* as the North Atlantic Rift finally locks onto PX. When that happens, PX will be in constant view for those on the Sun side as the end game of the run up to the Pole shift ensues. As it is *now*, we see PX on Soho almost every day/week proving that we are locked in orbit.

NASA bloopers:

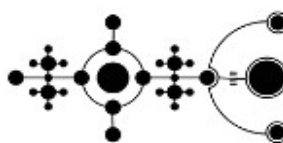
NASA has been covering up the presence of PX for 28 years. These days, with the satellite images being on public servers, anyone can [log in](#) and see the latest images of happenings around the Sun. Workers at NASA have software to remove the images of PX, but with hundreds of new ones every month, and with Earth, PX and the satellites being buffeted around by heavy particle flows it's becoming impossible to manage the coverup completely in this area. This [animated gif](#) (2-3 second movie) clearly shows that it had been edited by NASA. The planet you see is Venus, notice it's unnatural abrupt movement.

March 27th 2010, The [Zetas comment](#) on NASA: “They are locked in a death march because of their prior lies, unable to tell the truth because the fear the reaction of the public, and thus they continue to lie even when it becomes [obvious](#) they are doing so. In this, they only make the final reaction of the public more enraged, but it takes courage to finally face the public and tell the truth, and they would prefer to lie until it is time to bolt for their bunkers. However, we are here to tell them their lies won't stretch that far, and they will be caught at this game.”



Whither the moon? Incredibly, it will survive well, as in past pole shifts. Excitingly, our night sky will have a new perspective of the stars.

Crop Circle indicators



On the left, Clatford, (May 4th 2009) indicates a time line of PX's magnetic influence over Earth in the run up to the pole shift, L. to R.

To the right, Abbots Down (June 6, 2007): This crop circle is easy to figure out: Earth in an upright position pre-pole shift, rotation suspended with no axis tilt.



Putting the Clatford and Abbots Down crop circles into [perspective](#), using the Zetas explanations: The left side of Clatford shows a balance, top and bottom, indicating PX and Earth have not yet clashed to the point of throwing Earth into a wobble that we experience today as very unusual weather worldwide. Next in sequence, PX points its North pole at Earth and we have 3 days of darkness in the Northern hemisphere. We sit *between* these two points on the time line now. Next in sequence (3rd from Left), Earth changes plateau, then at the 4th is where Abbots Down is representative at the small parallel double bars to the right side of Clatford (for better definition, see the original [here](#)). The combination of the 2 sets of double bars straddling the center line represent 2 planets side by side – Earth and PX. This is the time hopefully the reader is safely ensconced at their survival location!, for this is the time when PX is looming in the sky and just hangs there growing larger by the hour to the size of the moon.

The Pole shift brings many problems and many solutions at the same time. Probably the most pressing of problems, besides *when* to move to your safe location, seems to be *where* to move. Knowing that the sea level worldwide will rise by 675 feet within 2 years of the pole shift (due to the melting *existing* poles), it doesn't make sense to me to relocate below that point, yet most existing housing is within that sector of land. If you live in a mountainous area the problem is to prepare for falling rock; if near a river, then flooding due to the vast amounts of rain due to fall, not to mention the flooding, at pole shift time. Ultimately, it's simple, if you don't want to have to relocate with everyone else retreating from the advancing ocean: move to a place above 675 feet of sea level. The solutions are beautiful: we will be living in simpler times, closer to the Earth and to one another, nothing could be lovelier.

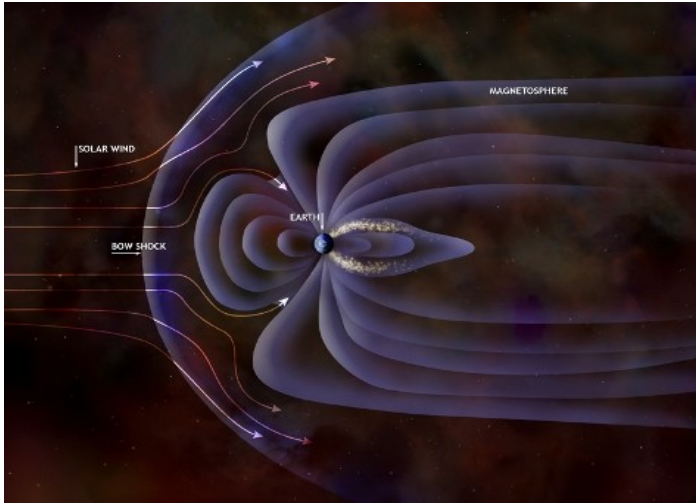


About the author: Chris Thomas Wakefield. I live in Victoria B.C. Canada. I am a Zeta contactee. My science must be supported by Spirit. I am driven to provide the best information for my newsletter.

The Last page is an exposé of PX's dramatic influence over Earth's magnetosphere. This is drawn from my recent email post to a listserv.

Earth's Magnetosphere

Below, we have a conceptual rendering of Earth's magnetosphere from Harvard Universities web archives as it would appear from standing on the moon at the apex of the first quarter phase:



Notice that the magnetic flow lines are contained by the magnetosheath, a combination of the solar wind, the Sun's powerful magnetic influence and the natural attraction of the opposite poles. This is a balanced and natural condition represented here. Notice how the magnetic flow lines from the Sun (indicated by the arrows pointing at Earth's poles) pierce the magnetosheath at the poles. The cosmic wind blows with the Sun's magnetic flow lines out from the Sun at 400 to 800 kilometers a second. This is why Earth's northern regions experience the magnificent Aurora Borealis, the results of cosmic radiation interacting with Earth's atmosphere:

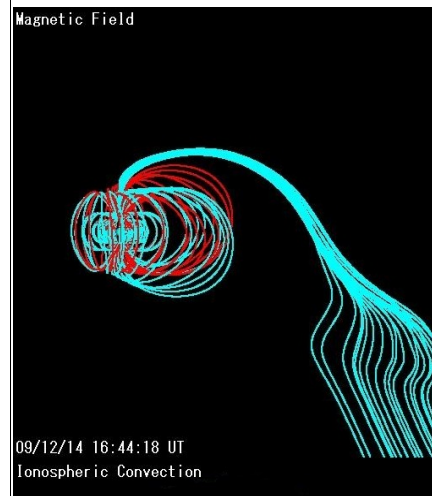


Here is a [website](#) that you can download simulated videos from real magnetosphere data (source: ACE satellite). These video files are AVI type: you may need [this software](#) installed to view them. The image near the top of the next column is a snapshot of my computer playing the March 26th 2010 video file:

Given that the Earth is bombarded by Cosmic particles from the Sun flying up to 500 Miles per second and the power of the Sun's magnetic flow lines drawing out Earth's magnetosphere a million miles out into space in the lee of the cosmic wind, you would think that nothing magnetic could breach this mighty flow:



Hello, what's this? Strands of magnetic flow lines poking into nowhere? This isn't a one time thing, this has been happening for many months, old news for those of us studying PX. What the image doesn't show, is *where* the flow lines go: they flow right into PX's powerful magnetosphere in a fantastic magnetic interplay with Earth. At times, Earth's South pole has disappeared entirely, the image on the left shows a severely reduced South Pole (December 14, 2009).



I'm not making this up folks, this is for real....

Questions or Comments are welcome, challenges too, but please be specific.

Chris Thomas.